

# GREEN/YELLOW/RED LIGHT-TOWER WITH ACOUSTIC SIGNAL KVL-LTW02



## MAIN PARAMETERS

Green/yellow/red light and acoustic signal for information about the function of equipments.

- Green/yellow/red light signal;
- Attentional acoustic signal;
- Long-life, high-brightness LED indication;
- The light-tower can be fixed with clamps on the TRILOGIQ-built shelf-system;
- Avoiding from unauthorized disassembly, the elements of light-tower are locked by special opening screw.



## TYPE RANGE

**KVL-LTW02** Light-tower, green/yellow/red light and acoustic signal.

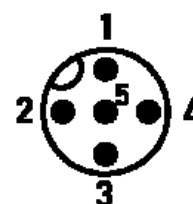
## CONNECTOR

M12, 5 Pole, male.

Cable colours: on the basis of Euro-Norm EN 50044.

Length of the cable: 2 meters.

	Cable colour	
1	Braun	Acoustic signal (+24V)
2	White	Red (+24V)
3	Blue	Green (+24V)
4	Black	Yellow (+24V)
5	Grey	COM



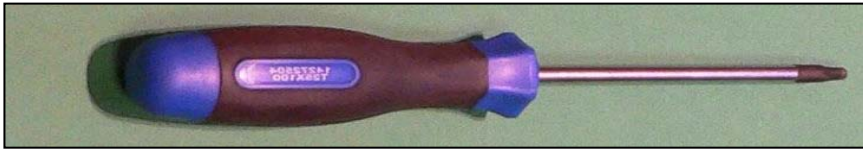
## FITTING INSTRUCTIONS

The module can be mounted to tubular frames with a plastic clamp.

The modules are delivered with clamps for tubular frames of 28 - 28,4 mm in diameter. If other needs arise, the diameter of the tube used should be provided on order.



Tools for fitting: TORX T30 screwdriver.



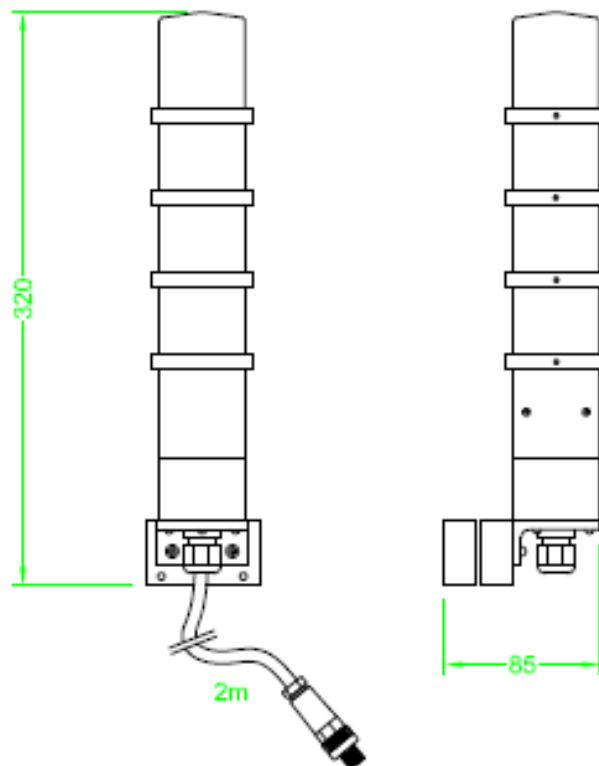
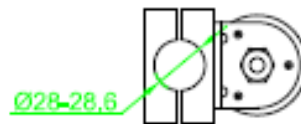
The process of mounting:

1. Remove the half of the plastic clamp from the module;
2. The switch module should be mounted and adjusted to the tubular frame to be clearly visible to the workers;
3. Fix the switch module with the other side of the clamp and screw both bold (approx. 5 Nm.);
4. Connect the module.



## DIMENSIONS

[scale in mm]



## CONTACT

### KVL COMP Vezérléstechnikai Kft.

2500 Esztergom, Nagy Sándor József u. 3. HUNGARY

Tel.: 00-36-33-501-616

Fax: 00-36-33-501-615

[www.kvlcomp.eu](http://www.kvlcomp.eu)

[info@kvlcomp.eu](mailto:info@kvlcomp.eu)

### KVL COMP s.r.o.

Komenského 35, 94301 Štúrovo, SLOVAKIA

Tel.: 00-36-33-501-616

Fax: 00-36-33-501-615

[www.kvlcomp.eu](http://www.kvlcomp.eu)

[info@kvlcomp.eu](mailto:info@kvlcomp.eu)